



*Innovative
Clean Air
Solutions*

Side Access Carbon Filter Housings

Effectively removes gases, odors, vapors



Aluminized Steel Extends Life, Enhances Appearance

Standard material of construction is 16 gauge aluminized steel selected to provide superior corrosion and heat resistance resulting in longer product life. Appearance is also enhanced compared to galvanized steel construction. Aluminized steel conforms to ASTM Spec A463 and is used in products such as space heaters, mufflers and incinerators which are subject to extremely corrosive conditions.

The housings are supplied with two access doors, hinged at the rear of the unit for easy access to the filters. Each door is fully gasketed around the perimeter and at the ends of the filter tracks. Quick action, positive lock, over center draw latches are used to seal the doors. Carbon housings are equipped with a 1-1/2" outer flange for easy connection to ductwork.

Options

- Weatherproof units for outside installations consist of a pitched roof, rain guards over the doors and caulking of all seams.
- Double skin insulation
- Flange adaptors to match up with air handlers. (Specify manufacturer)

- Select from variety of adsorbents
Activated Carbon
Potassium Permanganate
50/50 Blend
- 16 gauge aluminized steel
- Completely factory assembled
- Available with prefilters, afterfilters or both

Completely Factory Assembled - Reduces Installation Cost

Airguard carbon housings are constructed as a rugged one piece assembly for side service installations. Completely factory assembled, they are ready for installation in a minimum amount of time when received at the job site.

Available with Prefilters and/or Afterfilters

34" Deep Housings - Equipped with a track to hold 2" or 4" prefilters or afterfilters.

39-1/8" Deep Housings - Equipped with two tracks to hold 2" or 4" prefilters and afterfilters.

High Capacity Operation

Airguard carbon housings are rated at 500 FPM operation, containing 90 pounds of carbon per 2000 CFM. The trays are 24 x 24 x 1 or 12 x 24 x 1 (nominal) with a black powder coated finish. Spent trays are refillable with fresh carbon.

Designed for 3.0" W.G. Pressure - Positive or Negative

16 gauge steel with welded construction allows the standard units to operate at pressures up to 3.0" W.G. High pressure units for applications operating up to 10" W.G. are available. Contact factory for units operating in excess of 10" W.G.

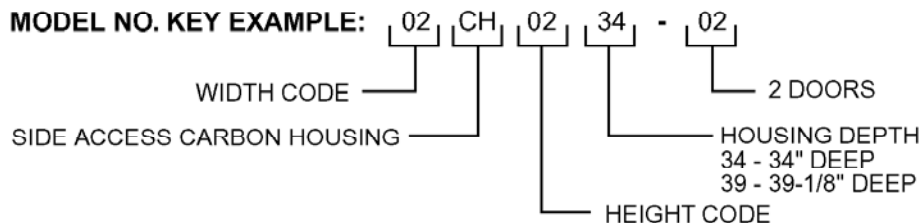
- High pressure design (10" W.G.)
- Static taps
- Support legs
- Hanger brackets

Side Access Carbon Filter Housing

DIMENSIONS, CAPACITIES and FILTERS

HT. CODE	OVERALL HEIGHT		WIDTH CODE									
			01	02	03	04	05	06	07	08	09	10
			OVERALL WIDTH									
			11-1/2"	23-1/2"	35"	47"	58-1/2"	70-1/2"	82"	94"	105-1/2"	117-1/2"
06	75"	RATED CAPACITY @500 FPM	3000	6000	9000	12000	15000	18000	21000	24000	27000	30000
		NO. TRAYS	36H	36F	36H 36F	72F	36H 72F	108F	36H 108F	144F	36H 144F	180F
		NO. FILTERS	3H	3F	3H 3F	6F	3H 6F	9F	3H 9F	12F	3H 12F	15F
05	63"	RATED CAPACITY @500 FPM		5000	7000	10000	12000	15000	17000	20000	22000	25000
		NO. TRAYS		30F	30H 30F	60F	30H 60F	90F	30H 90F	120F	30H 120F	150F
		NO. FILTERS		1H 2F	3H ■ 2F	2H 4F	4H ■ 4F	3H 6F	5H ■ 6F	4H 8F	6H ■ 8F	5H 10F
04	51"	RATED CAPACITY @500 FPM	2000	4000	6000	8000	10000	12000	14000	16000	18000	20000
		NO. TRAYS	24H	24F	24H 24F	48F	24H 48F	72F	24H 72F	96F	24H 96F	120F
		NO. FILTERS	2H	2F	2H 2F	4F	2H 4F	6F	2H 6F	8F	2H 8F	10F
03	39"	RATED CAPACITY @500 FPM		3000	4000	6000	7000	9000	10000	12000	13000	15000
		NO. TRAYS		18F	18H 18F	36F	18H 36F	54F	18H 54F	72F	18H 72F	90F
		NO. FILTERS		1H 1F	2H ■ 1F	2H 2F	3H ■ 2F	3H 3F	4H ■ 3F	4H 4F	5H ■ 4F	5H 5F
02	27"	RATED CAPACITY @500 FPM	1000	2000	3000	4000	5000	6000	7000	8000	9000	10000
		NO. TRAYS	12H	12F	12H 12F	24F	12H 24F	36F	12H 36F	48F	12H 48F	60F
		NO. FILTERS	1H	1F	1H 1F	2F	1H 2F	3F	1H 3F	4F	1H 4F	5F
01	15"	RATED CAPACITY @500 FPM		1000		2000		3000		4000		5000
		NO. TRAYS		6F		12F		18F		24F		30F
		NO. FILTERS		1H		2H		3H		4H		5H

*FILTER QUANTITY PER HOUSING H = HALF SIZE (11-3/8" x 23-3/8") F = FULL SIZE (23-3/8" x 23-3/8") ■ = DENOTES THAT UNIT REQUIRES A 12" x 12" BLANK-OFF PANEL SUPPLIED WITH THE UNIT.



APPROXIMATE SHIPPING WEIGHTS (34" / 39-1/8" Deep)

HEIGHT CODE	UNIT WIDTH									
	01	02	03	04	05	06	07	08	09	10
06	305/330	375/405	445/480	535/580	610/660	670/725	765/825	830/900	910/985	975/1055
05		330/335	395/425	475/515	540/585	600/650	685/740	740/800	810/875	880/950
04	230/250	280/300	335/360	405/440	465/505	510/550	590/640	635/685	700/755	770/830
03		240/260	290/315	345/375	400/430	440/475	505/545	550/595	605/655	655/710
02	155/165	185/200	235/255	275/300	320/345	355/385	420/455	445/480	495/535	535/580
01		155/165		225/245		310/335		410/445		485/525

WEIGHTS DO NOT INCLUDE FILTERS.



AIRGUARD
P.O. BOX 32570, LOUISVILLE, KENTUCKY 40232-2570
1-800-999-3458 FAX (502) 961-0930

Visit our Web Site - www.airguard.com
E-Mail Address - mailbag@airguard.com

Airguard has a policy of continuous product research and development and reserves the right to change design and specifications without notice.

Distributed by: